

THE CORPORATION OF THE TOWN OF HEARST

BY-LAW NO. 75-2025

Being a by-law to regulate traffic and
parking on highways and properties
within the Town of Hearst

WHEREAS Section 9 of the Municipal Act, S.O. 2001 (the Act), as amended, provides that a municipality has the capacity, rights, powers and privileges of a natural person for the purpose of exercising its authority under that Act or any other Act, and

WHEREAS pursuant to the Act and the Highway Traffic Act, R.S.O. 1990, as amended, municipal councils are empowered to adopt by-laws to regulate traffic and parking on highways and private or public properties, and

WHEREAS Section 102 (3) of the Act states that a by-law passed in accordance with subsection 2 may provide for the removal and impounding of any vehicle, at its owner's expense, parked or left contrary to the by-law, and

WHEREAS Council deems it advisable to adopt a new revised Traffic By-law to facilitate the enforcement of said regulation,

NOW THEREFORE, BE IT ENACTED by the Council of the Corporation of the Town of Hearst as follows:

1. THAT this By-law shall be known as the Town of Hearst Traffic and Parking By-law.
2. THAT whenever the masculine pronoun is used in this By-law, it shall be deemed to include the feminine gender or any gender.
3. THAT this By-law shall come into full force and effect on February 13th, 2026, and shall repeal and replace By-law Nos. 17-81 and 28-12.

READ AND PASSED IN OPEN COUNCIL

THIS 16th DAY OF DECEMBER, 2025.


MAYOR


CLERK



**Traffic and Parking
By-law No. 75-2025**

INDEX

PART I	Definitions	3 – 5
PART II	Obedience to Traffic Regulations	6
	Traffic Signals and Signs – Obedience	6
	Enforcement of By-law	6
PART III	Parking	7
	Methods of Parking	7
	General Parking Prohibitions	7 – 8
	Unreasonable Length of Time	8
	Night and Winter Months Parking	8
	Parking on Certain Public Properties	9
	Parking on Certain Private Properties	9-10
	Restricted Parking	10
	Specified Locations for a Limited Time During Stated Hours	10
	Specified Place – Accessible Parking	10
	No Parking at Any Time	10
	Fire Lanes	11
	Parking and Riding Bicycles	11
	Parking Meter Zone	11-12
	Exemptions	12-13
	Damages to Parking Meters	13
	Municipal Parking Lots	13-14
	Parking Contraventions	14-15
PART IV	Operation of Vehicles	16
	Barricaded Areas	16
	Funeral and Other Processions	16
	Blocking of Traffic Prohibited	16
	Interference with Road Maintenance	16
	Heavy Traffic	17
	Insecure Loads	17
	Rate of Speed	18
	Traffic Control Systems	18
	Stops at Intersections	18
	No Stopping Signs	18
	School Zones	18
	School Bus Loading Zones	19
	School Crossing Guard	19
	Obstructing View of Driver (Fence/Foliage)	19

PART V	Offence	20
	General Penalty	20
	Owner's Liability	20
	Subsequent Conviction	20
PART VI	General	21
	Standard Time and Daylight-Saving Time	21
	Ontario Highway Traffic Act to Govern	21
	Severability	21
	Schedules	21

**CORPORATION OF THE TOWN OF HEARST
TRAFFIC AND PARKING BY-LAW
NO. 75-2025**



PART I

1. DEFINITIONS

1.1 “BOULEVARD” means a Town-owned portion of land composed of grass, pavement, or concrete that forms part of a highway and separates the roadway from the sidewalk, but is not intended to serve as a sidewalk, driveway, travelled roadway, or shoulder;

1.2 “BY-LAW ENFORCEMENT OFFICER” means an officer appointed by Municipal Council to enforce the provisions of the by-laws of the Corporation of the Town of Hearst;

1.3 “COMMERCIAL MOTOR VEHICLE” means a motor vehicle having permanently attached thereto a truck or delivery body and includes any ambulance, hearse, casket wagon, fire apparatus bus and tractor used for hauling purpose on the highways;

1.4 “CROSSWALK” means,

- (a) that part of a highway at an intersection that is included within the connections of the lateral lines of the sidewalks on opposite sides of the highway measured from the curbs or, in the absence of curbs, from the edges of the roadway, or
- (b) any portion of a roadway at an intersection or elsewhere distinctly indicated for pedestrian crossing by signs or by lines or other markings on the surface;

1.5 “CURB” means the raised edge or the outer limit of the travelled portion of a highway;

1.6 “EMERGENCY VEHICLE” means a visibly marked vehicle owned or operated by a police department, a fire department, an ambulance, a public utilities company, which is used for work-related purposes;

1.7 “ENGINE COMPRESSION STYLE BRAKE” means a system by which vehicle braking is achieved by using the engine compression stroke to slow the vehicle drive wheels and is accomplished by opening the exhaust valve at or near the end of the compression stroke, thereby turning the power producing engine into a power-absorbing air compressor;

1.8 “GROSS WEIGHT” means the combined weight of vehicles and loads;

1.9 “HEAVY TRAFFIC” means the use of a highway by a vehicle, object or contrivance for moving loads, having a gross weight, including the vehicle, object or contrivance and loads, in excess of 4,400 kilograms, registered gross weight;

1.10 "HEAVY VEHICLE" means a motor vehicle, alone or together with any trailer, semi-trailer or other vehicle being towed by the motor vehicle, with a registration gross vehicle weight of more than 4,400 kilograms, or exceeding eleven (11) metres in total length, but excludes passenger vehicles and emergency vehicles;

1.11 "HIGHWAY" includes a common and public highway, street, avenue, parkway, driveway, square, place, bridge, viaduct or trestle, any part of which is intended for or used by the general public for the passage of vehicles and includes the area between the lateral property lines thereof;

1.12 "INTERSECTION" means the area embraced within the prolongation or connection of the lateral curb lines or, if none, then of the lateral boundary lines of two or more highways that join one another at an angle, whether or not one highway crosses the other;

1.13 "MOTOR VEHICLE" includes an automobile, motorcycle, motor assisted bicycle unless otherwise indicated in the Highway Traffic Act, and any other vehicle propelled or driven otherwise than by muscular power, but does not include the cars of electric or steam railways, or other motor vehicles running only upon rails, or a motorized snow vehicle traction engine, farm tractor, self-propelled implement of husbandry or road-building machine;

1.14 "OFFICIAL SIGN" means a sign approved by the Ministry of Transportation;

1.15 "PARK OR PARKING" when prohibited, means the standing of a vehicle whether occupied or not, except when standing temporarily for the purpose of and while actually engaged in loading or unloading merchandise or passengers;

1.16 "PARKING METER ZONE" means those highways or parts of highways on which parking, where permitted on such highways or parts of highways, is controlled and regulated by the use of parking meters;

1.17 "PEDESTRIAN" means a person afoot or in a wheelchair and children in wheeled carriages;

1.18 "PEDESTRIAN CROSSOVER" means any portion of a roadway, designated by by-law at an intersection or elsewhere distinctly indicated for pedestrian crossing by signs on the highway and by lines or other markings on the surface of the roadway as prescribed by the regulations;

1.19 "POLICE OFFICER" means any police officer of the Ontario Provincial Police;

1.20 "PRIVATE ROAD OR DRIVEWAY" every way, lane or place in private ownership and used for vehicular traffic by the owner and persons having been given express or implied permission from the owner, but not by other persons;

1.21 "ROADWAY" means the part of the highway that is improved, designed or ordinarily used for vehicular traffic, but does not include the shoulder, and, where a highway includes two or more separate roadways, the term « roadway » refers to any one roadway separately, and not all of the roadways collectively;

- 1.22 "SCHOOL CROSSING GUARD"** means a person sixteen years of age or older who is directing the movement of persons across a highway and who is,
(a) employed by a municipality, or
(b) employed by a corporation under contract with a municipality to provide the services of a school crossing guard;
- 1.23 "SIDEWALK"** means that portion of a highway between the curb lines or the lateral lines of a roadway and the adjacent property lines, improved by paving, concrete or other means, intended for the use of pedestrians;
- 1.24 "SIGHT TRIANGLE"** means a triangle that is formed by the intersection of the boundaries of two streets, and a line joining two points that are 6.0 metres back from the intersection;
- 1.25 "STAND OR STANDING"** when prohibited, means the halting of a vehicle, whether occupied or not, except for the purpose of and while actually engaged in receiving or discharging passengers;
- 1.26 "STOP"** when required, means a complete cessation of movement;
- 1.27 "STOP OR STOPPING"** when prohibited, means the halting of a vehicle, even momentarily, whether occupied or not, except when necessary to avoid conflict with other traffic or in compliance with the directions of a police officer or of a traffic control sign or signal;
- 1.28 "STREET"** same as "Highway";
- 1.29 "TOWN"** means the Corporation of the Town of Hearst;
- 1.30 "TRAFFIC"** means pedestrians, ridden or herded animal vehicles and other conveyances, either singly or together while using any highway for purpose of travel;
- 1.31 "TRAFFIC CONTROL SIGNAL"** means a traffic control signal system that consists of one set of no less than three coloured lenses, red, amber and green, mounted on a frame and commonly referred to as a signal head and includes a bicycle traffic control signal;
- 1.32 "TRAFFIC CONTROL SIGN"** means a manual, electronic or mechanical device used to direct traffic;
- 1.33 "TRAFFIC CONTROL LIGHTS"** means all of the signal equipment making up the installation at any location;
- 1.34 "VEHICLE"**: includes a motor vehicle, trailer, traction engine, farm tractor, road-building machine, bicycle and any vehicle drawn, propelled or driven by any kind of power, including muscular power, but does not include a motorized snow vehicle or a street car.

PART II

2. OBEDIENCE TO TRAFFIC REGULATIONS

2.1 TRAFFIC SIGNALS AND SIGNS - OBEDIENCE

Any person in charge of a motor vehicle and every person on any highway shall promptly obey all traffic signals given by an Officer of the Ontario Provincial Police, a Municipal By-law Enforcement Officer, a duly authorized school crossing guard or any automatic or manually operated traffic control signs, including those listed in Schedule "A" of this By-law, for the purpose of directing or regulating traffic as hereinafter provided, and shall comply with the content of every sign, symbol, or mark legally erected or placed for the purpose of regulating or directing traffic.

2.2 ENFORCEMENT OF BY-LAW

- 2.2.1 Any By-law Enforcement Officer or Ontario Provincial Police Officer has the authority to enforce any provision of this By-law.
- 2.2.2 An Officer may enter on land at any reasonable time and in accordance with the conditions set out in the Municipal Act, 2001, S.O. 2001, c. 25, as amended, for the purpose of carrying out an inspection to determine whether or not this By-law is being complied with.
- 2.2.3 In addition to any other penalty or fine levied by reason of a contravention of this By-law, any Police Officer or By-law Enforcement Officer, upon discovery of any motor vehicle or other vehicle parked or left in contravention of this By-law, may cause it to be moved, removed, impounded, restrained or immobilized, or taken to and placed or stored in a suitable place and all costs and charges for removing, care and storage thereof, shall be chargeable to and collected from the owner of the vehicle and shall be a lien upon the vehicle which may be enforced in the manner provided by the Repair and Storage Liens Act, R.S.O. 1990, c. R.25., as amended, in addition to any penalty that he may have become liable to, as a result of any infraction to this By-law.
- 2.2.4 The Chief Administrative Officer has the authority to cancel parking contraventions issued for which a Parking Infraction Complaint Form has been filled out or for a contravention which has been issued in error.
- 2.2.5 Notwithstanding any provisions of this By-law, the Public Works Foreman or his designate, may, during periods of heavy snow accumulation and by the use of appropriate signage, temporarily prohibit parking for a sufficient period of time to allow municipal employees to remove the snow on any road, metered or non-metered, or portion thereof, where the combination of accumulated snow and permitted parking creates an unsafe roadside environment, provided, however, that said signage shall not become effective until two (2) hours after being installed.

PART III

3. PARKING

3.1 METHODS OF PARKING

- 3.1.1 No person shall park or stop a vehicle on any highway except on the right-hand side in the direction of travel, with the right front and right rear wheels no more than 15 cm (6 inches) from the curb or edge of the roadway. However, this provision does not prohibit parking on the left-hand side of a one-way highway nor angle parking where it is permitted.
- 3.1.2 Similarly, where no curb exists, a vehicle shall be parked with the front and rear wheels parallel to and as close as practicable to the right-hand edge of the roadway as is practical, without stopping or parking on a sidewalk, walking path or trail, or on any portion of the highway covered with grass or otherwise not intended for vehicle use.

3.2 GENERAL PARKING PROHIBITIONS

No person shall park a vehicle so as to contravene any of the provisions of this By-law, including those listed hereafter, and in the event any vehicle shall be so unlawfully parked, the owner of such vehicle shall be subjected to a penalty as prescribed in this By-law and the Set Fines By-law.

3.2.1 No person shall, at any time, park a vehicle:

- i) on a highway in such a manner as to obstruct the ordinary traffic or for an unreasonable length of time, having regard to the traffic requirements of such highway;
- ii) in front of the Fire Hall;
- iii) in front of the entrance to a hotel, office building, any place where goods or merchandise are regularly delivered or removed, opposite a public or private driveway, or in front of the entrance to a theatre, auditorium or other public place while large gatherings are being held;
- iv) within 3 metres of a fire hydrant;
- v) on any bridge, or within 15 metres of the entrance and exit thereof;
- vi) in such a position as to prevent the convenient removal of any vehicle previously parked;
- vii) on any sidewalk;
- viii) on any highway for more than 24 hours:

- ix) in front of the entrance to a public or private driveway, so as to prevent ingress and egress to or from such driveway;
- x) in any public park, except in areas provided for such purpose;
- xi) within 9.14 metres of any intersection;
- xii) within 15.24 metres of an intersection controlled by traffic control signals;
- xiii) in a manner that obstructs snow plowing or removal operations, at any time on any highway, from the first snowfall of the season until the last snowfall has ended;
- xiv) on the boulevard of any highway.

3.2.2 **Unreasonable Length of Time**

No person shall park a vehicle on any highway or public or municipal parking lot for an unreasonable length of time.

For the purpose of this by-law, an unreasonable length of time shall mean for a period which exceeds beyond:

- four (4) hours, if the vehicle is illegally parked (in contravention to this By-law), or
- twenty-four (24) hours in all other instances.

3.2.3 **Night and Winter Months Parking**

- i) No person shall park a commercial vehicle or delivery truck on any highway at night between 8:00 p.m. and 5:00 a.m. the following morning, or on Sundays and statutory holidays;
- ii) From November 1 through April 15 of each year, no person shall park or leave standing any vehicle on any highway between the hours of 12:00 a.m. (midnight) and 7:00 a.m.;
- iii) During winter, when snow removal signs are posted on any highway, no person shall park or leave standing any vehicle on a highway;
- iv) Any person who had parked a vehicle on the highway prior to the posting of the signs mentioned in subsection iii) above shall remove the vehicle within two (2) hours of the signs being posted;
- v) Subsections (ii) and (iii) hereabove shall not apply to authorized emergency vehicles, while on official duty, or physicians engaged in an emergency call.

3.2.4 Parking on Certain Public Properties

- i) No person shall park or leave a vehicle standing in areas of properties designated by a school or hospital board where official signs indicate that parking is prohibited, except for specific purposes as stated on the signs.
- ii) No person shall park or leave a vehicle standing in the Town Hall parking lot between 8:00 a.m. and 5:00 p.m., Monday through Friday, except for municipal officials and employees, and patrons of the Town Hall or the Claude Larose Recreation Centre.
- iii) No person shall park or leave a vehicle standing in the designated parking spaces at the north end of the closed-up portion of Tenth Street on school days between 8:00 a.m. and 4:00 p.m., except for visitors of the Clayton Brown Public School, the Hearst High School, and the École secondaire catholique de Hearst, provided a valid parking pass, issued by the Town, is visibly displayed on the sun visor, rearview mirror or the dashboard of the vehicle while so parked.
- iv) No person shall park or leave a vehicle standing in the designated parking spaces along the north wall of the Claude Larose Recreation Centre, east of the Stéphane Lecours Swimming Pool, on school days between 8:00 a.m. and 4:00 p.m., except for patrons of the municipal swimming pool.
- v) No person shall park or leave a vehicle standing in the designated parking area on the closed-up portion of Tenth Street, between Alexandra Street and Edward Street, east of the Claude Larose Recreation Centre, on school days between 8:00 a.m. and 4:00 p.m., except for patrons of the recreation centre.

3.2.5 Parking on Certain Private Properties (Schedule B)

Upon receipt of a written request from the owner (or occupant) of a private property, Municipal Council may authorize parking enforcement on a private, commercial and/or institutional property by municipal By-law Enforcement Officers.

The driver or owner of a motor vehicle parked or left on private property is not liable to a penalty, unless such property is clearly marked by signs erected thereon, which prohibits unauthorized parking in specific locations of said property.

- i) No person shall park or leave a vehicle standing at any of the private property locations listed in Schedule "B" of this By-law without the consent of the property owner or occupant, where clearly visible parking signs, authorized by the Town, have been posted on the property.

- ii) Notwithstanding subsection (i) hereabove, the owner of a vehicle parked or left on a private property is not liable to have the motor vehicle removed from such property, except in instances where the property owner (or occupant) submits to the Town of Hearst By-law Enforcement Department a written request to have said vehicle removed from the property.

3.3 RESTRICTED PARKING

3.3.1 Specified Location for a Limited Time During Stated Hours (Schedule C)

When properly worded signs have been erected and are on display, no person shall park a vehicle on any of the highways, parts of highways, or side of highways named in Schedule "C" to this By-law, during the hours specified and/or for periods longer than specified in said schedule.

3.3.2 Specified Place – Accessible Parking (Schedule D)

- i) Accessible Parking Spaces:

No person shall, at any time, park, stop, or leave a vehicle standing in any designated accessible parking space described in Schedule "D" of this By-law, unless a valid Accessible Parking Permit (APP) has been issued to the vehicle owner, an organization, or a passenger being picked up or transported in the vehicle, provided that the parking space is clearly identified with signs and a painted surface. The APP must be properly displayed on or in the vehicle in accordance with the requirements of the Highway Traffic Act, its regulations, and this By-law.

Subsection i) hereabove shall not apply to any person operating a motor vehicle that is temporarily stopped for the purpose of picking up or disembarking a passenger who is a person with a disability.

- ii) Accessible Parking Permits (APP)

A permit issued for the purpose of parking in a designated accessible parking space shall be displayed on the sun visor or on the dashboard of a vehicle so that the international symbol of access for the person with a disability, the permit number and the expiry date are clearly visible from the outside of the vehicle.

3.4 NO PARKING AT ANY TIME (Specific Locations) (Schedule E)

No person shall park a vehicle at any time on the highways or parts of highways listed in Schedule "E" of this By-law, provided that properly worded signs have been posted.

3.5 FIRE LANES (Schedule F)

Where signs to this effect are displayed, no person shall stop, park or leave a vehicle standing in a designated fire lane (fire route) on any of the public or private properties identified in Schedule "F" of this By-law.

3.6 PARKING AND RIDING BICYCLES

- 3.6.1 No person shall park a bicycle on a street curb or sidewalk unless it is standing upright. Bicycles shall not be placed or left lying on their side along any curb or sidewalk.
- 3.6.2 Every person riding a bicycle or tricycle shall keep their feet on the pedals and their hands on the handlebars at all times. Riders must travel in a straight line, keeping as close as practicable to the right-hand side of the street or within a designated bicycle lane, if one exists. Riding bicycles or tricycles abreast on any street is prohibited.
- 3.6.3 No bicycle with a wheel diameter greater than twelve (12) inches shall be ridden on any sidewalk within the municipality.
- 3.6.4 It is unlawful for more than one person to ride or be carried on a single bicycle within the municipality, except when the bicycle is specifically designed for two riders, such as a tandem bicycle.
- 3.6.5 No person shall ride a bicycle on any sidewalk within the municipality.

3.7 PARKING METER ZONE (Schedule G)

- 3.7.1 The areas hereinafter listed as Schedule "G" to this By-law are hereby designated as the Parking Meter Zone.
- 3.7.2 Parking meters shall be installed, maintained, and operated within the Parking Meter Zone to control and regulate vehicle parking and to measure and record the duration of each parking period.
- 3.7.3 No person shall park a vehicle within the Parking Meter Zone between 9:00 a.m. and 6:00 p.m. on Mondays, Tuesdays, Wednesdays, Thursdays, and Saturdays, and between 9:00 a.m. and 9:00 p.m. on Fridays, throughout the year except statutory holidays, unless the driver or operator deposits the required amount of money in the parking meter corresponding to the parking space used.

- 3.7.4 The allowed parking duration within the Parking Meter Zone, as specified in subsection 3.7.3 hereabove, shall be limited to a maximum of two (2) hours. Each parking space shall be equipped with a parking meter programmed for a two-hour time limit. The allowable parking time for each coin deposited shall be as specified below, up to a total maximum of one hundred and twenty (120) minutes, regardless of the type, number, or combination of coins inserted.
- i) for a 5-cent coin (nickel), 3 minutes;
 - ii) for a 10-cent coin (dime), 6 minutes;
 - iii) for 25-cent coin (quarter), 15 minutes;
 - iv) for \$1.00 coin (loony), 60 minutes; and
 - v) for \$2.00 coin (toony), 120 minutes.
- 3.7.5 No person shall park a vehicle outside the painted lines identifying a designated parking space. The parking space for which each meter is used may be identified by lines or marks made on the highway or curb alongside of such meter either parallel to or at an angle with the curb and every vehicle parking next to any meter shall at all times, without limitation to the days and hours specified in subsection 3.7.3 hereabove, be parked within the lines or marks so made, if any. In the event that the aforementioned lines and marks are nonexistent or not discernable, the vehicle bumper of any vehicle parked shall be adjacent to the designated corresponding meter for the parking space used.
- 3.7.6 Nothing in this By-law shall prevent the driver of a vehicle from using the unexpired time remaining on a meter from its previous user without depositing a coin therein.
- 3.7.7 Visitors from outside the Hearst area who hold a valid Free Parking Pass may park in the Parking Meter Zone and Municipal Parking Lot free of charge while conducting temporary business or visiting, for a maximum period of fourteen (14) days, provided that the Free Parking Pass is displayed in a conspicuous location inside the vehicle, visible to the By-law Enforcement Officer, and that all other provisions of this By-law are observed.

The Hearst area is hereby defined as the Town of Hearst, the Township of Mattice-Val Côté, the Constance Lake First Nation, and the communities of Hallebourg, Jogues, Coppell, Lac Ste-Thérèse, Ryland and the surrounding unorganized territories.

Municipal employees working at Town Hall or the Gilles Gagnon Welcome Centre and who have been duly authorized by the Chief Administrative Officer are permitted to issue Free Parking Passes to visitors at these locations.

3.7.8 Exemptions

- i) The depositing of coins in parking meters is not required for official emergency vehicles or for vehicles owned by the Town of Hearst, the Hearst Power Distribution Co. Ltd. and the Hearst Connect Corporation, while actively engaged in public business such as call-outs, repairs, maintenance, or construction on streets, sidewalks, or boulevards, or while loading or unloading goods or passengers, provided that the vehicle stops only for the minimum time necessary to carry out these activities.

- ii) The depositing of coins in parking meters is not required for a vehicle transporting a person registered as a quadriplegic, provided that proof has been submitted to the Town and a legally recognized disabled person parking permit from the Province of Ontario, registered in the quadriplegic person's name, is properly displayed inside the vehicle.
- iii) The owner of a vehicle displaying a veteran licence plate issued by the Ontario Ministry of Transportation or another provincial transportation authority is exempt from paying for parking in the Parking Meter Zone, provided the vehicle is parked in accordance with this By-law and for a maximum period of one (1) hour.

3.7.9 Damages to Parking Meters

No person shall damage, deface, tamper with, break, or destroy any parking meter or any part thereof, nor impair its proper functioning, nor open any meter or remove coins from it without authorization—whether by inserting an object other than a coin or by any other means. Anyone who contravenes this provision is guilty of an offence and is liable to a fine, in addition to the cost of repairing the parking meter.

This section shall not apply where a meter is accidentally damaged, provided the extent and details of such damage are forthwith reported to the By-law Enforcement Officer.

3.8 MUNICIPAL PARKING LOTS (Schedule H)

- 3.8.1 The areas hereinafter listed in Schedule "H" to this By-law are hereby designated as Municipal Parking Lots.
- 3.8.2 Parking meters shall be installed, maintained, and operated in the Municipal Parking Lots to control and regulate vehicle parking, and to measure and record the duration of each parking period.
- 3.8.3 No person shall park a vehicle within any municipal parking lot between 9:00 a.m. and 6:00 p.m. on Mondays, Tuesdays, Wednesdays, Thursdays and Saturdays, and between 9:00 a.m. and 9:00 p.m. on Fridays throughout the year, except for statutory holidays, unless the driver or operator deposits the required amount of money in the parking meter corresponding to the parking space used.
- 3.8.4 The allowed parking duration within the Downtown Parking Lot shall be limited to a maximum of eight (8) hours. Each parking space shall be equipped with a parking meter programmed for a four-hour time limit. The allowable parking time for each coin deposited shall be as specified below, up to a total maximum of two hundred and forty (240) minutes, regardless of the type, number, or combination of coins inserted.
 - i) for a coin of 5 cents, 3 minutes; and
 - ii) for a coin of 10 cents, 6 minutes; and
 - iii) for a coin of 25 cents, 15 minutes; and
 - iv) for a coin of \$1.00, 60 minutes; and
 - v) for a coin of \$2.00, 240 minutes.

- 3.8.5 Except as otherwise provided for in this By-law, the parking of vehicles in a municipal parking lot between the hours specified in subsection 3.8.3 above is prohibited unless the vehicle is parked in a designated numbered parking space and the above-mentioned fee is paid.
- 3.8.6 Notwithstanding the above, a person may park a vehicle in one of the designated reserved parking spaces located in the southern part of the Downtown Parking Lot fronting Prince Street, provided he is the holder of a valid Municipal Parking Permit, and that said Parking Permit is visibly displayed on the sun visor, rearview mirror or the dashboard of the vehicle while so parked. Said Permit shall not, however, authorize the holder to occupy a numbered parking space elsewhere in the parking lot.
- 3.8.7 A maximum of twenty (20) Municipal Parking Permits shall be issued at any one time for a fee of thirty dollars (\$30) per month, plus applicable taxes, payable in advance. The Town reserves the right to revoke any or all Parking Permits at any time, subject to the reimbursement of any unexpired portion, on a pro rata basis.

3.9. PARKING CONTRAVENTIONS

- 3.9.1 Where a vehicle is found parked in contravention of the provisions of this By-law, the By-law Enforcement Officer so finding such vehicle shall attach to the said vehicle a Parking Infraction Notice in the form of a serially numbered ticket stating:
- that the vehicle is unlawfully parked or that a parking violation has been committed;
 - the licence plate number and a concise description of the vehicle;
 - the date, time and place of the alleged offence;
 - the amount of the set fine payable for the violation, said fine having been approved by the Chief Judge of the Provincial Offences Court;
 - that the owner or operator of said vehicle may pay the set fine as indicated on the Parking Infraction Notice, by :
 - i. placing the envelope containing the required sum of money in the box under the parking space register in the Downtown Parking Lot;
 - ii. paying the same in person at Town Hall located at 925 Alexandra Street in the Town of Hearst or by depositing the Parking Infraction Notice envelope containing the payment in the night drop box at the building main entrance;
 - iii. making an online payment on the Town of Hearst website; or
 - iv. mailing the payment at the following address:

Town of Hearst
P.O. Box 5000
Hearst, Ontario P0L 1N0
 - that failure to pay the fine or penalty imposed within the period prescribed under the Provincial Offences Act will result in the application of the procedures set out in that Act, and the penalties provided for in this By-law shall apply.

3.9.2 In the event that a vehicle remains parked after a Parking Infraction Notice has been affixed thereto;

- i) additional contraventions may be issued and placed on the vehicle every hour thereafter; and
- ii) if the same vehicle remains parked at the same location after four (4) consecutive Parking Infraction Notices have been issued, a By-law Enforcement Officer may cause the vehicle to be towed in accordance with subsection 2.2.3 of this By-law.

PART IV

4. OPERATION OF VEHICLES

4.1 BARRICATED AREAS (Schedule I)

No person shall operate a vehicle upon or enter any highway designated in Schedule "T" to this By-law when such highway is roped off, barricaded, or otherwise marked by words or notices prohibiting use thereof.

4.2 FUNERAL AND OTHER PROCESSIONS

4.2.1 No person shall intersect a funeral or other ceremonial procession while it is in motion, except under the direction of an Officer of the Ontario Provincial Police.

1.2.2 The driver of a vehicle in a funeral or other procession shall drive as near to the right-hand edge of the roadway as practicable and safe.

4.3 BLOCKING OF TRAFFIC PROHIBITED

4.3.1 No person shall park or leave a vehicle standing in a manner that obstructs or interferes with the movement of traffic on any roadway or part thereof, except when necessary for commercial delivery purposes.

4.3.2 The driver of a vehicle used for the delivery of goods, wares, or merchandise shall, when stopping to make a delivery, stop the vehicle only at the curb or side of the highway.

4.3.3 No person shall park or leave standing a delivery vehicle in a Parking Meter Zone for a period exceeding fifteen (15) minutes between the hours of 9:00 a.m. and 6:00 p.m., Monday to Saturday inclusively, and between 6:00 p.m. and 9:00 p.m. on Fridays.

4.4 INTERFERENCE WITH ROAD MAINTENANCE

Whenever snow removal or other road maintenance warning signs have been erected and are displayed, no person shall park or stand any vehicle upon any highway at any time so as to obstruct, hinder, or otherwise interfere with snow removal, snow clearing, or any other road maintenance operations.

4.5 HEAVY TRAFFIC (Schedule J)

- 4.5.1 No person shall drive or park a heavy vehicle on any highway within the territorial limits of the municipality, except on those highways or portions of highways described in Schedule "J" of this By-law.

Exemptions:

- This provision does not apply to emergency vehicles or vehicles owned by the Town, the Hearst Power Distribution Co. Ltd or the Hearst Connect Corporation.
- A heavy commercial vehicle may be driven on any municipal highway for the purpose of delivering, receiving, loading or unloading goods, wares, merchandise or materials.

4.5.2 Temporary Heavy Traffic

Pursuant to the *Road Licensing By-law No. 21-98*, the Town may, under special circumstances, including construction-related activities, issue a temporary heavy traffic licence contingent upon compliance with the prescribed criteria.

4.5.3 Reduced Load Period

A reduced load period, effective from March 1 to June 30 of each year, shall apply to all highways under the jurisdiction of the Town, except for those highways described in Schedule "J" of this By-law.

4.5.4 Early Termination of Reduced Load Period

The reduced load period may be terminated by the Chief Administrative Officer at an earlier date if, in the opinion of the Director of Public Works and Engineering Services, the road conditions are suitable to accommodate full loads without risk of causing road damage.

4.5.5 Maximum Heavy Vehicle Weight on Certain Bridges

The maximum gross vehicle weight allowed on the following bridges:

- located on Cloutier Road South, 1.6 km South of Highway 11,
- located on Collin Road, 250 metres south of Highway 11, and
- located on Després Road, 950 metres north of Highway 11,

is hereby set at 4,536 kilograms (5 tons) per axle.

4.5.6 Engine Compression Style Brakes

No person shall, at any time, operate engine compression style brakes (commonly known as "Jake Brakes") within the territorial limits of the municipality.

4.6 INSECURE LOADS

No person shall operate or permit to be operated upon a highway a motor vehicle that carries a load or draws a vehicle that carries a load unless the load contents are loaded, bound, secured, contained or covered so that no portion of said load may become dislodged or fall, leak, spill or be blown out from the vehicle.

4.7 RATE OF SPEED (Schedule K)

No person shall drive a motor vehicle at a speed exceeding 50 kilometres per hour on any highway within the municipality, except on those portions of highways where lower or higher speed limits have been prescribed, as described in Schedule "K" to this By-law.

Slow-moving vehicles shall be driven as near the curb as circumstances and weather conditions permit.

4.8 TRAFFIC CONTROL SYSTEMS (Schedules L and L - 1)

4.8.1 Traffic control signal lights (street lights) shall be used at the intersections and places listed and described in Schedule "L" to this By-law.

4.8.2 Flashing green lights shall be used on the traffic control signal lights at the intersections and places listed and described in Schedule "L-1" of this By-law.

4.9 STOPS AT INTERSECTIONS (Schedule M)

Where properly worded stop signs are displayed, the operator or driver of every vehicle moving on any highway or part thereof named or described in Schedule "M" to this By-law shall bring the vehicle to a full stop before entering or crossing the intersection of such highway with the highway set out opposite thereto.

4.10 NO STOPPING SIGNS (Schedule N)

No person shall stop a vehicle in a manner that contravenes any provision of this By-law, specifically at locations listed in Schedule "N" of this By-law and where properly worded signs are displayed.

4.11 SCHOOL ZONES (Schedule O)

4.11.1 The highways or portions of highways, within the distance of 150 metres along the highway in either the direction beyond the limits of the land used for the purpose of a school and prescribed at a maximum rate of speed of 40 kilometres per hour for motor vehicles driven upon them, shall be designated as school areas, and signs to that effect shall be erected, as indicated in Schedule "O" of this By-law.

4.11.2 The speed limits of 40 kilometres per hour so prescribed shall be effective between 8:00 a.m. and 4:00 p.m. on school days.

4.12 SCHOOL BUS LOADING ZONES (Schedule P)

The portions of highways listed in Schedule "P" of this By-law are designated as School Bus Loading Zones and shall be marked with appropriate signs.

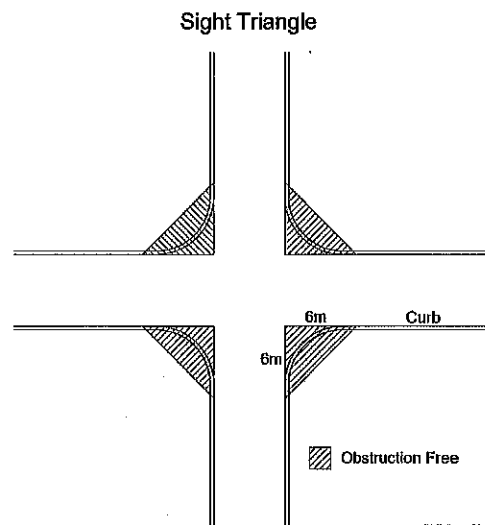
4.13 SCHOOL CROSSING GUARD

A school crossing guard about to direct children across a highway with a speed limit not in excess of 40 kilometres per hour shall, prior to entering the roadway, display a school crossing stop sign in an upright position visible to vehicular traffic approaching from each direction and the driver of any vehicle approaching the stop sign shall stop before reaching the crossing.

4.14 OBSTRUCTING VIEW OF DRIVER – FENCE - FOLIAGE

4.14.1 On a corner residential lot within the sight triangular space formed by the street lines, no person shall plant, erect or maintain a hedge, shrub, tree, fence or other structure which obstructs the vision of vehicular traffic at or approaching the intersection.

4.14.2 The owner of a corner lot found to be in contravention with this By-law may be subject to a penalty. If the owner fails to take appropriate action to remove or correct the offending obstruction, the Town may remove, or cause to be removed, the obstruction at the owner's expense. The cost of such work may be recovered by adding the costs to the tax roll and collecting them in the same manner as property taxes. The Town shall not be liable to compensate the owner or any other person with an interest in the property for any actions taken under this subsection.



4.14.3 Where trees or shrubs within a corner lot's sight triangle were planted by a previous owner, the current owner shall take all necessary actions to remove the sight obstruction to the satisfaction of the By-law Enforcement Officer or Property Standards Officer.

PART V

5. OFFENCE

5.1 GENERAL PENALTY

Every person who contravenes any provisions of this By-law is guilty of an offence and liable upon conviction to a fine, excluding costs, as provided by the Provincial Offences Act, R.S.O. 1990, as amended, and is subjected to any other penalties permitted by law for each offence.

5.2 OWNERS PENALTIES

The owner of a vehicle that is parked, stopped, left standing, or otherwise found to be in contravention of this By-law is guilty of an offence and, upon conviction, is liable to the penalties provided herein, unless, at the time of the contravention, the vehicle was in the possession of a person other than the owner, without the owner's consent.

5.3 SUBSEQUENT CONVICTION

Where an offence is a continuing offence, each new day that the offence is continued shall constitute a separate and distinct offence.

PART VI

6. GENERAL

6.1 STANDARD TIME AND DAYLIGHT-SAVING TIME

Whenever in this By-law the time of day or hour is referred to, the same shall be construed in accordance with the Standard Time or Daylight-Saving Time as may be in current official use of the Town.

6.2 ONTARIO HIGHWAY TRAFFIC ACT TO GOVERN

The provisions of the Highway Traffic Act, R.S.O. 1990, as amended, shall prevail over the provisions of this By-law.

6.3 SEVERABILITY

If any section, subsection or provision of this By-law is found to be invalid, illegal, or unenforceable by a court of competent jurisdiction, such invalidity shall not affect the validity or enforceability of the remaining sections, subsections or provisions of this By-law, which shall remain in full force and effect.

6.4 SCHEDULES

Schedules:

- A: Pedestrian Crossovers;
 - B: Restricted Parking on Certain Private Properties;
 - C: Restricted Parking for a Limited Time During Stated Hours at Specific Locations;
 - D: Restricted Parking for a Specific Purpose – Accessible Parking;
 - E: No Parking – Specific Places;
 - F: Fire Lanes (Routes),
 - G: Parking Meter Zone;
 - H: Municipal Parking Lots;
 - I: Barricaded Areas for a Limited Time During Stated Hours at Specific Places;
 - J: Heavy Traffic Routes;
 - K: Rate of Speed Greater/Lower Than 50 km/hour;
 - L: Traffic Control Systems;
 - L – 1. Flashing Lights on Traffic Control Systems;
 - M: Stop at Intersection;
 - N: No Stopping Specific Places;
 - O: School Zones; and
 - P: School Bus Loading Zones;
- attached hereto form part of this By-law.

Pedestrian Crossovers

Item	Amending By-law	Street Name	Location
1		9 th	immediately south of the intersection at Edward Street, running east-west
2		Edward	immediately west of the intersection at 10 th Street, running north-south
3		Prince	immediately west of the intersection at 10 th Street, running north-south
4		15 th	immediately north of the intersection at Edward Street, running east-west
5		Highway 583 North	immediately south of the intersection at Veilleux Street, running east-west

Restricted Parking on Certain Private Property

Item	Amending By-law	Owner / Occupant	Location of Private Property	Approved Enforcement			
				Fire Lane	Heavy Vehicles	Accessible Parking	Customers Only
1		Canadian Imperial Bank of Commerce	831 George Street (rear parking lot)				X
2		Pharmacie Novena (2566108 Ont. Ltd)	1509 Highway 11		X	X	
3		École secondaire catholique de Hearst	30 Tenth Street	X			
4		Companion Hotel/Motel (865072 Ont. Ltd)	930 Front Street	X			
5		École publique Passeport Jeunesse	75 – 9 th Street	X			
6		Foyer des pionniers Nursing Home	67 – 15th Street	X			
7		Evolution Hearst (medical clinic)	1403 Edward Street			X	
8		Notre-Dame Hospital	1404 Edward Street	X		X	
9		Far Northeast Training Board	1425 Front Street		X	X	
10		LCBO	806 George Street (staff parking)				
11		Canadian Tire	1330 Front Street	X	X	X	
12		Canadian Tire Gas Bar	1404 Front Street		X		X
13		Loblaws / Independent	1551 Highway 11	X	X	X	
14		The Bargain! Shop	1315 Front Street	X	X	X	
15		La Coopérative de Hearst	1105 George Street			X	X
16		Université de Hearst	60 – 9th Street				X
17		Caisse Alliance	908 and 903 Prince Street				X

Restricted Parking for a Limited Time During Stated Hours at Specific Locations

Item	Amending By-law	Location	Side of Street	Prohibited Hours	Max. Parking Time
1		Alexandra Street, from 10 th Street for a distance of 42.7 metres in an easterly direction	north	8:00 a.m. to 4:00 p.m. on school days	nil
2		Edward Street from 9 th Street, in a westerly direction, up to the property located at 1114 Edward, on the north side and the property located at 1015 Edward, on the south side	north & south	8:00 a.m. to 4:00 p.m. on school days only	nil
3		11 th Street, between Prince and George Street	east	8:00 a.m. to 4:00 p.m. on school days	nil
4		George Street, between 10 th and 11 th Street, except where parking meters are installed	north & south	nil	1 hour
5		9 th Street, between Prince and Alexandra Street	east & west	nil	15 minutes
6		9 th Street, from opposite the northeast corner of the Université de Hearst, in a northerly direction for a distance of 56.5 metres	west	8:00 a.m. to 4:00 p.m. on school days only	nil
7		Prince Street, between 10 th and 11 th Street	south	8:00 a.m. to 4:00 p.m. on school days only	
8		Prince Street, between 8 th and 9 th Street	south		1 hour – 8:30 am to 6:00 pm Monday to Saturday
9		Prince Street, from 80 metres west of 9 th Street, up to 10 th Street	south	8:00 a.m. to 4:00 p.m. on school days only	nil
10		10 th Street, from Prince Street to Alexandra Street	east & west	8:00 a.m. to 4:00 p.m. on school days	nil

Restricted Parking for a Specific Purpose – Accessible Parking

Item	Amending By-law	Location	Specific Location
1		908 Prince Street, north side, between 9 th and 10 th Street (Caisse Alliance)	metered parking space no. 19 in front of the building
2		south side of Prince Street, between 8 th and 9 th Street	space located 17 metres east of the intersection at 9 th Street (adjacent to Canada Post)
3		north side of George Street, between 8 th and 9 th Street	metered space No. 36, located 89.6 metres east of the intersection of 9 th Street
4		south side of George Street, between 8 th and 9 th Street	metered parking space No. 73, located 21 metres east of the intersection of 9 th Street
5		523 Highway 11 – Gilles Gagnon Welcome Centre	designated space in parking area
6		1008 Edward Street – Stéphane Lecours Swimming Pool	designated space in parking area, located on the north wall of the recreation centre, east of the swimming pool entrance
7		1008 Edward Street – Claude Larose Recreation Centre	three (3) designated spaces in parking lot, adjacent to the main entrance (2 on building's west wall, 1 in parking lot area west of the building)
8		925 Alexandra Street – Town Hall	designated space in parking lot, located south of the main entrance
9		1015 Edward Street – Place St-Paul residence	designated space on the east side of the parking lot, adjacent to the main entrance
10		south side of George Street, between 9 th and 10 th Street (adjacent to 905 George Street – Galerie Larose)	metered parking space No. 72, located 25.6 metres west of the 9 th Street intersection

Restricted Parking for a Specific Purpose – Accessible Parking

Item	Amending By-law	Location	Specific Location
11		south side of George Street, between 10 th and 11 th Street (adjacent to 1021 George Street - Nor-Dent building)	designated street parking space on the south side of George Street, fronting the walkway leading to the building's main entrance
12		René Fontaine Municipal Airport (1 Airport Road)	designated space, being the first space on the northeast corner of the parking lot
13		south side of George Street, between 8 th and 9 th Street (adjacent to 801 George Street – Hearst Public Library)	metered parking space No. 85 on the south side of George Street, directly fronting the public library, being the first parking space immediately west of intersection of George and 8 th Street
14		Closed-up portion of 10 th Street, (34 10 th Street - Double Rink Tournament Hall – Claude Larose Recreation Centre)	designated space in parking area adjacent to the hall entrance, on the east side of the building
15		Heritage Sawmill Marketplace (830 Front Street)	designated space in parking area, located west of said area

No Parking - Specific Places

Item	Amending By-law	Location
1		on part of Edward Street, from the intersection of the closed-up portion of 10 th Street, in a westerly direction for a distance of 104 metres (area adjacent to the recreation centre building, up to the end of the easterly entrance), on the north side
2		on part of Fontaine Drive, from the Marchildon Road intersection with Fontaine Drive, in an easterly direction for a distance of 1,074 metres, on the north and south sides
3		on Highway 11 (Front Street), from 6 th to 15 th Street, on the north side
4		on part of Front Street, from the railway crossing off Highway 11, in a westerly direction, up to the west boundary line of 3 rd Street, on the north and south sides
5		on part of Front Street, from the 12 th Street intersection, in a westerly direction up to 15 th Street, on the south side
6		on part of the roadway portion of Houle Street, from the west boundary line of 15 th Street up to the northerly portion of the Aubin Street intersection, on both sides
7		on part of Prince Street, starting at 43 metres of the easterly section of the 9 th Street intersection up to 63 metres, being a total distance of 20 metres (Downtown Municipal Parking Lot exit), on the north side
8		on part of 9 th Street, between Front Street and George Street, on the east and west sides
9		on part of 9 th Street, from 9 metres of the intersection of Alexandra Street, in a southerly direction, up to 10.66 metres, on the west side
10		on part of 9 th Street, from the intersection of Kitchener Street, up to the Notre-Dame Cathedral entrance, on the east side
11		on 9 th Street, north of the most northerly entrance to the Collège Boréal institution off 9 th Street, up to the bridge crossing the Mattawishkwia River, on the west side
12		on Highway 583 North, from the Highway 11 intersection up to the town municipal boundary, on both sides
13		on Highway 583 South, from the bridge up to the town boundary, on both sides

Fire Lanes

École publique Passeport Jeunesse School

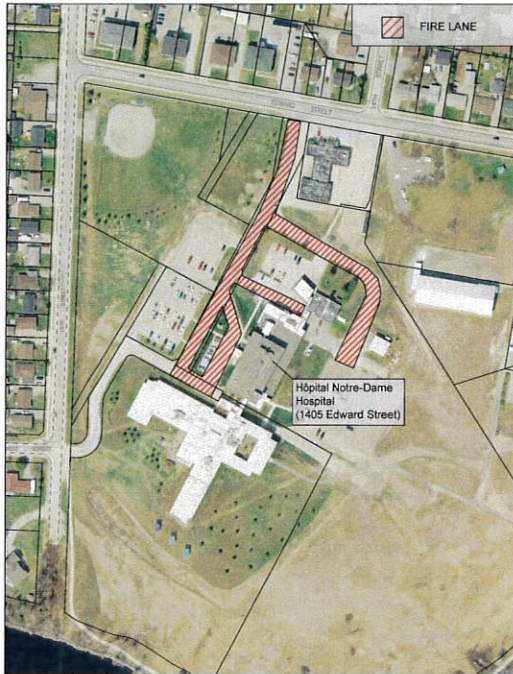


École secondaire catholique Hearst School



Fire Lanes

Notre-Dame Hospital



Foyer des Pionniers Nursing Home



Canadian Tire



Companion Hotel-Motel



Parking Meter Zone

Item	Amending By-law	Sector
1		south side of Front Street, from 7 th Street to 11 th Street
2		north and south sides of George Street, from 7 th Street to 11 th Street
3		north side of Prince Street, from 8 th Street to 11 th Street
4		east and west sides of 8 th Street, from Front Street to Prince Street
5		east and west sides of 9 th Street, from George Street to Prince Street
6		east and west sides of 10 th Street, from Front Street to Prince Street
7		east and west sides of 11 th Street, from Front Street to George Street

Municipal Parking Lots

Item	Amending By-law	Name	Location
1		Downtown Parking Lot	east of 9 th Street, between George and Prince Street, on lots 164 and 269; entrance via George Street and exit on Prince Street

Barricaded Areas

Item	Amending By-law	Specific Place	Stated Hours
1		George Street between 8 th and 9 th Streets	3:30 p.m. to 6:00 p.m. on Halloween nights (October 31 st) only

Heavy Traffic Routes

Heavy traffic is prohibited on all municipal streets, except those identified in this Schedule

Item	Amending By-law	Street Name	From	To
1		Front (Connecting Link)	15 th Street	east intersection of Front Street and Highway 11
2		Front	west intersection with Highway 11	east intersection with Highway 11
3		3 rd	intersection with Front Street	Prince Street
4		583 North	Highway 11	Northern municipal boundary
5		Fontaine	east intersection of Highway 11 and Fontaine Drive	west intersection of Highway 11 and Fontaine Drive
6		Jolin	Fontaine Drive	east end of Jolin Street
7		Rouse	70 metres south of the intersection of Rouse Street and Jolin Street	north end of Rouse Street
8		583 South	Gaspésie Road	southern municipal boundary
9		Gaspésie	Highway 583 South	Highway 11
10		La Petite Gaspésie	Gaspésie Road	southern boundary of the ONR railway track allowance
11		Vandette	Highway 11 West	north end of Vandette Road
12		Marchildon	southeast end of Marchildon Road at intersection with Fontaine Drive	southwest end of Marchildon Road at intersection merging with Fontaine Drive

Rate of Speed Greater/Lower Than 50 km/hour

Item	Amending By-law	Street Name	From	Up To	Max Speed
1		583 North	J.D. Levesque Park entrance, then northerly	northern municipal boundary	80 km/hour
2		Gaspésie	Highway 583 South	Highway 11	70 km/hour
3		Johnson's Lake	Marchildon Road	Airport Road	70 km/hour
4		583 South	2300 metres south of the Cemetery Lane intersection	southern municipal boundary	80 km/hour
5		Cloutier South	McNee Street	Blais Road	70 km/hour
6		Cloutier North	railway crossing	northern municipal boundary	70 km/hour
7		McNee	railway crossing	western municipal boundary	70 km/hour
8		Blais	Highway 583 South	Cloutier Road South	70 km/hour
9		Collin	Highway 11	Bosnick Road	70 km/hour
10		Bosnick	Collin Road	Begin Road	70 km/hour
11		Marchildon	Jolin Street	Fontaine Drive	70 km/hour
12		Edward	9 th Street	15 th Street	40 km/hour
13		Edward	9 th Street	a point 40 metres west of 8 th Street	40 km/hour on school days, 8:00 a.m. to 4:30 p.m.
14		7 th	Kitchener Street	southern end of 7 th Street (river)	40 km/hour on school days, 8:00 a.m. to 4:30 p.m.
15		8 th	a point 60 metres north of Kitchener Street	southern end of 8 th Street (river)	40 km/hour on school days, 8:00 a.m. to 4:30 p.m.
16		9 th	a point 20 metres north of George Street	Hallé Street	40 km/hour on school days, 8:00 a.m. to 4:30 p.m.

Rate of Speed Greater/Lower Than 50 km/hour

Item	Amending By-law	Street Name	From	Up To	Max Speed
17		10th	a point 20 metres north of George Street	southern end of 10 th Street	40 km/hour on school days, 8:00 a.m. to 4:30 p.m.
18		11th	a point 20 metres north of George Street	southern end of 11 th Street	40 km/hour on school days, 8:00 a.m. to 4:30 p.m.
19		Prince	a point 20 metres east of 12 th Street	a point 47 metres west of 8 th Street	40 km/hour on school days, 8:00 a.m. to 4:30 p.m.
20		George	a point 80 metres west of 11 th Street	a point 65 metres east of 9 th Street	40 km/hour on school days, 8:00 a.m. to 4:30 p.m.
21		Alexandra	a point 20 metres east of 12 th Street and 10 th Street	- end of Alexandra Street (track and field property) - a point 40 metres west of 8 th Street	40 km/hour on school days, 8:00 a.m. to 4:30 p.m.
22		Edward	9 th Street	8 th Street	40 km/hour on school days, 8:00 a.m. to 4:30 p.m.
23		Kitchener	9 th Street	7 th Street	40 km/hour on school days, 8:00 a.m. to 4:30 p.m.
24		Boulley	7 th Street	a point 30 metres east of 7 th Street	40 km/hour on school days, 8:00 a.m. to 4:30 p.m.
25		Rouse	Jolin Street	Fontaine Drive	40 km/hour on school days, 8:00 a.m. to 4:30 p.m.

Rate of Speed Greater/Lower Than 50 km/hour

Item	Amending By-law	Street Name	From	Up To	Max Speed
26		Allen	a point 19 metres west of Rouse Street	eastern extremity of Allen Street	40 km/hour on school days, 8:00 a.m. to 4:30 p.m.
27		Veilleux	Rouse Street	a point 150 metres east of Mailloux Street	40 km/hour on school days, 8:00 a.m. to 4:30 p.m.
28		Mailloux	Veilleux Street	a point 32 metres south of Tremblay Street	40 km/hour on school days, 8:00 a.m. to 4:30 p.m.
29		Fontaine	a point 15 metres west of Rouse Street	a point 140 metres west of Highway 11	40 km/hour on school days, 8:00 a.m. to 4:30 p.m.
30		Tremblay	- Fontaine Drive and - Fontaine Drive	- Tremblay Street - a point 98 metres east of Mailloux Street	40 km/hour on school days, 8:00 a.m. to 4:30 p.m.
31		Jolin	Rouse Street	Jolin Street	40 km/hour on school days, 8:00 a.m. to 4:30 p.m.

Traffic Light Control Systems

Item	Amending By-law	Intersection
1		9 th Street and George Street
2		9 th Street and Highway 11 (Front Street)
3		9 th Street and Prince Street
4		15 th Street and Highway 11

Flashing Lights on Traffic Control Signals

Item	Amending By-law	Description and Location
1		A flashing green indication is provided for westbound traffic on the Highway 11 signal at the intersection with 9 th Street.
2		A flashing green indication is provided for westbound traffic on the Highway 11 signal at the intersection with 15 th Street.
3		Traffic control signals at the 9 th Street and George Street intersection are programmed to flash red in all directions between 9:00 p.m. and 6:00 a.m., nightly.
4		Traffic control signals at the 9 th Street and Prince Street intersection are programmed to flash red in all directions between 9:00 p.m. and 6:00 a.m., nightly.

Stop at Intersection

	Amending By-law	Street Name	Direction	Opposite Street
1		3 rd	northerly	Front
2		5 th	northerly	Front
3		5 th	northerly & southerly	Prince
4		5 th	northerly & southerly	Edward
5		6 th	northerly	Front
6		6 th	southerly	Boulley
7		7 th	northerly	Front
8		7 th	northerly & southerly	Edward
9		7 th	northerly & southerly	Prince
10		8 th	northerly	Front
11		8 th	northerly & southerly	Edward
12		8 th	northerly & southerly	Prince
13		10 th	northerly & southerly	Prince
14		10 th	northerly	Front
15		10 th	southerly	Alexandra
16		11 th	northerly	Front
17		11 th	southerly	Prince
18		12 th	northerly	Front
19		12 th	southerly	Edward
20		13 th	northerly & southerly	Edward
21		13 th	northerly	Prince
22		14 th	northerly	Prince
23		14 th	southerly	Edward
24		Airport	easterly	Johnson's Lake
25		Alary	southerly	Highway 11
26		Alexandra	easterly & westerly	9 th
27		Alexandra	easterly & westerly	7 th
28		Alexandra	easterly & westerly	5 th
29		Alexandra	easterly & westerly	6 th
30		Alexandra	easterly & westerly	8 th
31		Alexandra	easterly & westerly	12 th
32		Alexandra	easterly & westerly	13 th
33		Alexandra	easterly & westerly	14 th
34		Alexandra	westerly	15 th
35		Alexandra	westerly	10 th
36		Algoma	northerly	McNee
37		Allen	westerly	Fontaine
38		Arkininstall	southerly	West
39	road not developed	Arkininstall	northerly	McNee

Stop at Intersection

Item	Amending By-law	Street Name	Direction	Opposite Street
40		Aubin	easterly	Houle
41		Aubin	westerly	Mongeon
42		Barrette	southerly	Highway 11
43		Bégin	northerly	Gaspésie
44		Bergeron	easterly & westerly	Barrette
45		Berville	easterly	Chalykoff
46		Berville	northerly	Brisson
47		Berville	easterly & westerly	Quirion
48		Blais	easterly	Highway 583 South
49		Blanchard	southerly	Highway 11
50		Blanchard	northerly	Tremblay
51		Boucher	easterly	Houle
52		Boucher	westerly	McManus
53		Boulley	westerly	7 th
54		Brisson	westerly	Highway 583 North
55		Bryant	easterly	Labelle
56		Bryant	westerly	Algoma
57		Camiré	westerly	Highway 583 South
58		Cemetery Lane	southerly	Highway 583 South
59		Cemetery Lane	westerly	Girard
60		Cessna	easterly	Highway 583 South
61		Chalykoff	southerly	Tremblay
62		Charboneau	northerly	Berville
63		Cloutier South	northerly	Highway 11
64		Cloutier North	southerly	Highway 11
65		Collin	northerly	Highway 11
66		Collin	southerly	Bosnick
67		Collin	northerly	Bosnick
68		Dillon	northerly	Blais
69		Doucet	westerly	Chalykoff
70		Edward	easterly & westerly	9 th
71		Edward	easterly & westerly	6 th
72		Edward	easterly & westerly	12 th
73		Edward	westerly	15 th
74		Flood	westerly	St-Laurent
75		Fontaine	westerly	Highway 11 East
76		Fontaine	easterly	Jolin
77		Fontaine	westerly	Marchildon
78		Front (X2)	northerly	Highway 11
79		Frost	northerly	West

Stop at Intersection

Item	Amending By-law	Street Name	Direction	Opposite Street
80		Garnett	Northerly	Allen
81		Garnett	Southerly	Fontaine
82		Gaspésie	Southerly	La Petite Gaspésie
83		Gaspésie	northerly	Highway 11 East
84		Gaspésie	westerly	Highway 583 South
85		George	easterly & westerly	11 th
86		George	easterly	3 rd
87		George	easterly & westerly	8 th
88		George	easterly & westerly	5 th
89		George	easterly & westerly	10 th
90		George	easterly & westerly	7 th
91		George	easterly & westerly	6 th
92		George	westerly	12 th
93		Hallé	easterly	Highway 583 South
94		Holler	easterly	Trahan
95		Highway 583 North	southerly	Highway 11
96		Hospital Grounds	northerly	Edward
97		Hospital Grounds	westerly	15 th
98		Houle	easterly	15 th
99		Houle	southerly	West
100		Irwin	easterly	Labelle
101		Jolin	easterly	Rouse
102		Jolin	westerly	Marchildon
103		Jolin	southerly	Fontaine
104		Johnson's Lake	southerly	Marchildon
105		Kitchener	easterly & westerly	8 th
106		Kitchener	easterly & westerly	7 th
107		Kitchener	westerly	9 th
108		Kitchener	easterly	5 th
109		Kitchener	easterly & westerly	6 th
110		Labelle	northerly & southerly	McNee
111		Labelle	northerly	Highway 11 West
112		Lafond	northerly	Després
113		Lafond	southerly	Highway 11
114		Lambert	northerly	Berville
115		La Petite Gaspésie	southerly	Gaspésie

Stop at Intersection

Item	Amending By-law	Street Name	Direction	Opposite Street
116		Laurier	northerly	West
117		Lecours	westerly	Trahan
118		Mailloux	southerly	Highway 11
119		Mailloux	northerly	Veilleux
120		Marchildon	southerly	Highway 11 West
121		Maurice	easterly	Gilles
122		McManus	southerly	West
123		McManus	northerly	Aubin
124		McNee	easterly & westerly	Cloutier South
125		McNee	easterly & westerly	Labelle
126		McNee	easterly	St-Laurent
127		Mongeon X 2	westerly	St-Laurent
128		Patterson	easterly	Chalykoff
129		Pearson	southerly	West
130		Pearson	westerly	St-Laurent
131		Pellow	westerly	Cloutier North
132		Picard	northerly	Brisson
133		Picard	southerly	Tremblay
134		Piper	easterly	Highway 583 South
135		Polnicky	southerly	West
136		Polnicky	easterly	West
137		Powell	southerly	Aubin
138		Prince	easterly & westerly	12 th
139		Prince	easterly and westerly	15 th
140		Prince	easterly & westerly	6 th
141		Prince	easterly	3 rd
142		Prince	easterly	15 th
143		Proulx	easterly	Highway 583 North
144		Quirion	southerly	Highway 11
145		Quirion	northerly & southerly	Tremblay
146		Riverside	northerly	Samson
147		Rose	southerly	Lecours
148		Rosevear	southerly	Despres
149		Rouse	northerly & southerly	Allen
150		Rouse	southerly	Fontaine
151		Roy	northerly	Blais
152		St-Laurent	southerly	West
153		Stolz	easterly	Trahan
154		Trahan	southerly	Highway 11 West
155		Tremblay	westerly	Fontaine
156		Tremblay	easterly & westerly	Highway 583 North

Stop at Intersection

Item	Amending By-law	Street Name	Direction	Opposite Street
157		Tremblay	easterly & westerly	Quirion
158		Tremblay	westerly	Mailloux
159		Vandette	southerly	Highway 11
160		Vanier	northerly	West
161		Veilleux	easterly	Highway 583 North
162		Veilleux	easterly & westerly	Mailloux
163		Veilleux	westerly	Rouse
164		Villeneuve	northerly	Bryant
165		Villeneuve	northerly	Bryant
166	street not developed	Wade	westerly	Polnicky
167	street not developed	Wade	northerly	McNee
168		West	easterly & westerly	St-Laurent
169		West	easterly	15 th
170		West	northerly	McNee
171		Wyborn	northerly	Bryant
172		Wyborn	westerly	Algoma

No Stopping Specific Places

Item	Amending By-law	Street Name	Side	Location	Time
1		lane in front of Éducatôt Hub building (1100 Edward Street)	north		7:00 a.m. to 6:30 p.m., Monday to Friday
2		9 th Street, from Front Street to George Street	east & west	20 metres in all four (4) directions of intersection with George Street	all times
3		Edward	north	from 9 th Street to 10 th Street	8:00 a.m. to 4:30 p.m. school days
4		10 th	west	from Prince Street to Alexandra Street	8:00 to 9:00 a.m. and 3:00 to 4:30 p.m. school days
5		Alexandra	north	from 10 th Street up to 42.7 metres in an easterly direction	8:00 to 9:00 a.m. and 3:00 to 4:30 p.m., school days

School Zones

Item	Amending By-law	Street Name	From	To
1		11 th	a point 20 metres north of George Street	southern end of 11 th Street
2		10 th	a point 20 metres north of George Street	southern end of 10 th Street
3		9 th	a point 20 metres north of George Street	Highway 583 South, north of Hallé Street
4		8 th	a point 60 metres north of Kitchener Street	southern end of 8 th Street (river)
5		7 th	Kitchener Street	southern end of 7 th Street (river)
6		George	a point 80 metres west of 11 th Street	a point 65 metres east of 9 th Street
7		Prince	a point 20 metres east of 12 th Street	a point 47 metres west of 8 th Street
8		Alexandra	a point 20 metres east of 12 th Street	east end of Alexandra Street (track and field property)
9		Alexandra	10 th Street	a point 40 metres west of 8 th Street
10		Edward	a point 20 metres east of 12 th Street	a point 40 metres west of 8 th Street
11		Kitchener	9 th Street	7 th Street
12		Boulley	7 th Street	a point 30 metres east of 7 th Street

Main Sector

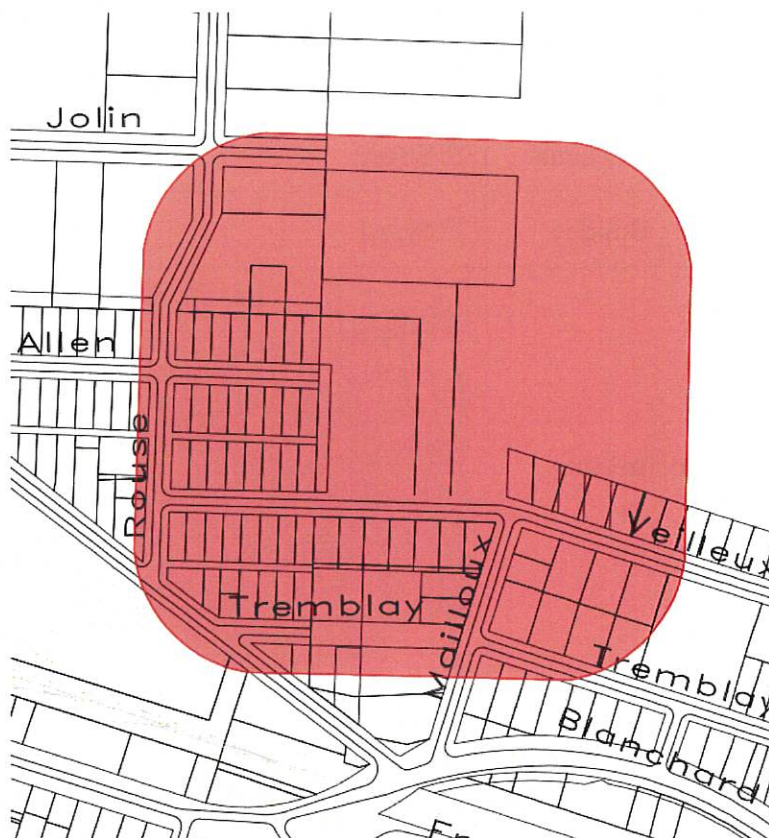


School Zone

School Zones

Item	Amending By-law	Street Name	From	To
14		Allen	a point 19 metres west of Rouse Street	eastern end of Allen Street
15		Veilleux	Rouse Street	a point 150 metres east of Mailloux Street
16		Mailloux	Veilleux Street	a point 32 metres south of Tremblay Street
17		Fontaine	a point 15 metres west of Rouse Street	a point 140 metres west of Highway 11
18		Tremblay	Fontaine Drive	eastern end of Tremblay Street
19		Tremblay	western end of Tremblay Street	a point 98 metres east of Mailloux Street
20		Jolin	Rouse Street	eastern end of Jolin Street

St-Pie-X Sector School Zone



School Bus Loading Zones

Item	Amending By-law	Street Name	Side	Location
1		Veilleux	north	from a point 80 metres west of Mailloux Street, to a point 146 metres, west of Mailloux St.
2		Tenth	west	from Prince Street to Alexandra Street
3		Alexandra	north	from 10 th Street up to 43 metres in an easterly direction
4		9 th	west	a point 166 metres south of Edward Street